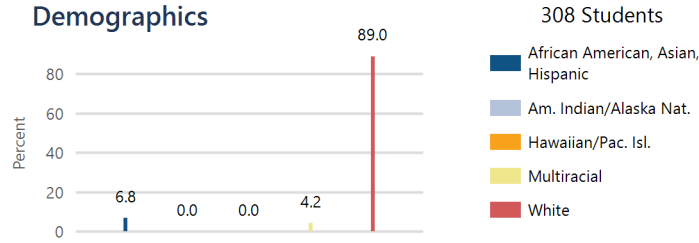




**Wolf Creek Elementary School -**  
**Spring Hill USD 230**

19250 Ridgeview Road, Spring Hill, KS 66083  
 (913) 592-7233  
<http://www.usd230.org>  
 Principal: **Elizabeth Cooper**

System Accreditation Status: **Accredited**  
 ESSA Annual Meaningful Differentiation: **Meeting**  
 Grades: **PK-5**  
 Superintendent: **Link Luttrell**

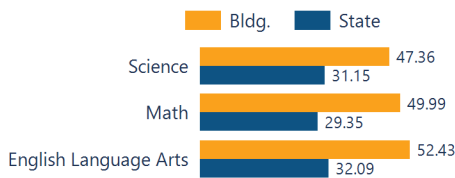


**District Kansans Can Star Recognition**

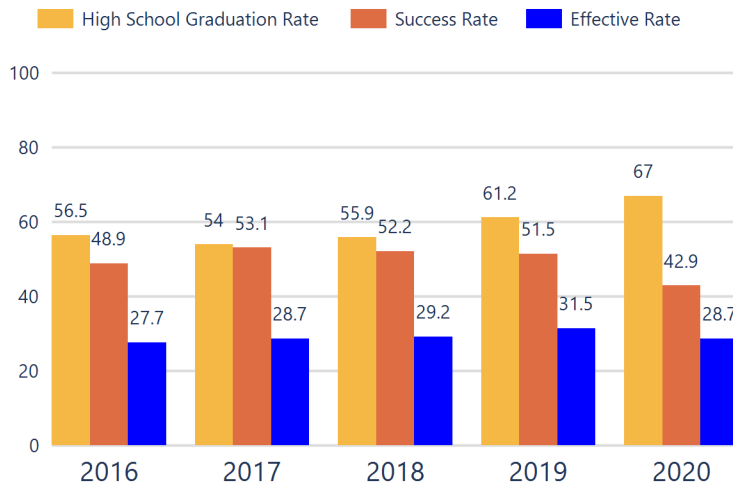
	Gold	Silver	Bronze	Copper
Social-Emotional Growth				
Kindergarten Readiness				
Individual Plan of Study				
Academically Prepared for Postsecondary				
Civic Engagement				
High School Graduation				
Postsecondary Success				

**Academically Prepared for Postsecondary Success**

The percentage of students who scored at Levels 3 and 4 on the state assessment.



**District Postsecondary Effectiveness**



**Kansas CAN lead the world!**  
 Graduation **95%**  
 Effective Rate 70-75%

**Five-Year Graduation Avg**  
**58.7%**

**Five-Year Success Avg**  
**49.7%**

**Five-Year Effective Avg**  
**29.2%**

**95% Confidence Interval for the Predicted Effectiveness Rate**  
**44.5 - 48.4%**

The numerator and denominator in the Five-Year Averages contain total student counts over five years (2016-2020) and are rounded to the nearest whole number.

- Graduation Rate:** The 4-year adjusted cohort graduation rate is the number of students who graduate in four years with a regular high school diploma divided by the number of students who entered high school as 9th graders four years earlier (adjusting for transfers in and out).
- Success Rate:** A student must meet one of the four following outcomes within two years of High School graduation.
  - Student earned an Industry Recognized Certification while in High School.
  - Student earned a Postsecondary Certificate.
  - Student earned a Postsecondary Degree.
  - Student enrolled in Postsecondary in both the first and second year following High School graduation.
- Effective Rate:** The calculated Graduation Rate multiplied by the calculated Success Rate.

**GRADUATION RATE**

The four-year adjusted cohort graduation rate is the percentage of students in a cohort, adjusted for transfers into and out of the school, district, or state, who graduate with a regular high school diploma within four years of entering high school.

**ATTENDANCE RATE**

Rate at which students are present at school, not including excused or unexcused absences.

**CHRONIC ABSENTEEISM**

Percentage of students who miss 10% or more of school days per year either with or without a valid excuse.

**DROPOUT RATE**

The dropout rate is calculated annually and reflects the number of seventh– twelfth grade students who drop out in any one school year. A dropout is any student who exits school between October 1 and September 30 with a dropout EXIT code AND does not re-enroll in school by September 30.

State: **N/A** School ESSA Operating Expenditures Per Pupil 89.3

Expenditures reflect those for the normal day-to-day operation of schools as reported by the Local Education Agency. The following expenditures are excluded: capital outlay, school construction and building improvements, equipment and debt services. **\$14,188**

State: **92.7%** 92.1

State: **Click here for State Financial Accountability.**

State: **22.1%** 25.4

State: **N/A** 1.4



### School Academic Success

### Academically Prepared for Postsecondary Success

State Assessment scores are displayed by student subgroup over three years time in three subjects: Math, English Language Arts (ELA), and Science. Assessment scores are not available for the 2020 school year.

#### ALL STUDENTS

	2019-20			2020-21			2021-22		
	Math	ELA	Sci	Math	ELA	Sci	Math	ELA	Sci
Level 1	N/A	N/A	N/A	12.88	17.61	12.12	13.41	14.63	19.29
Level 2	N/A	N/A	N/A	36.59	29.53	30.30	36.58	32.92	33.33
Level 3	N/A	N/A	N/A	29.89	36.26	28.78	32.92	35.97	24.56
Level 4	N/A	N/A	N/A	20.61	16.58	28.78	17.07	16.46	22.80

#### FREE AND REDUCED LUNCH STUDENTS

	2019-20			2020-21			2021-22		
	Math	ELA	Sci	Math	ELA	Sci	Math	ELA	Sci
Level 1	N/A	N/A	N/A	34.61	32.00	33.33	18.18	22.72	N/A
Level 2	N/A	N/A	N/A	38.46	44.00	41.66	27.27	22.72	N/A
Level 3	N/A	N/A	N/A	19.23	20.00	16.66	40.90	45.45	N/A
Level 4	N/A	N/A	N/A	7.69	4.00	8.33	13.63	9.09	N/A

#### STUDENTS WITH DISABILITIES

	2019-20			2020-21			2021-22		
	Math	ELA	Sci	Math	ELA	Sci	Math	ELA	Sci
Level 1	N/A	N/A	N/A	27.02	35.13	21.42	44.44	55.55	N/A
Level 2	N/A	N/A	N/A	40.54	35.13	50.00	33.33	25.92	N/A
Level 3	N/A	N/A	N/A	16.21	13.51	14.28	14.81	11.11	N/A
Level 4	N/A	N/A	N/A	16.21	16.21	14.28	7.40	7.40	N/A

#### AFRICAN-AMERICAN STUDENTS

	2019-20			2020-21			2021-22		
	Math	ELA	Sci	Math	ELA	Sci	Math	ELA	Sci
Level 1	N/A	N/A	N/A	N/A	N/A	N/A	N/A	N/A	N/A
Level 2	N/A	N/A	N/A	N/A	N/A	N/A	N/A	N/A	N/A
Level 3	N/A	N/A	N/A	N/A	N/A	N/A	N/A	N/A	N/A
Level 4	N/A	N/A	N/A	N/A	N/A	N/A	N/A	N/A	N/A

#### HISPANIC STUDENTS

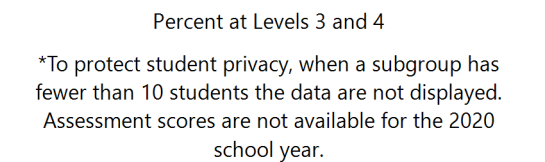
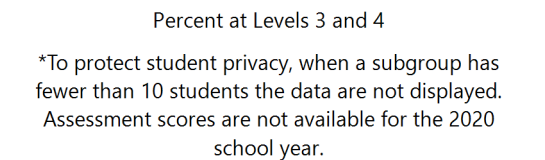
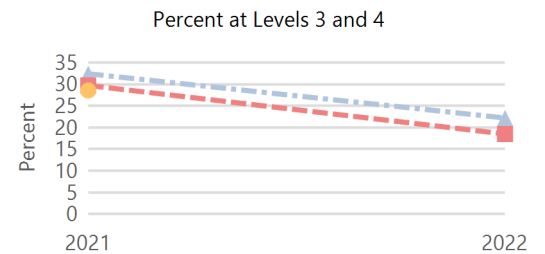
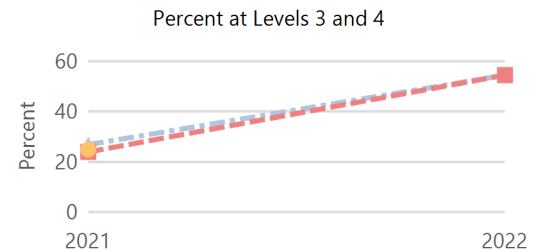
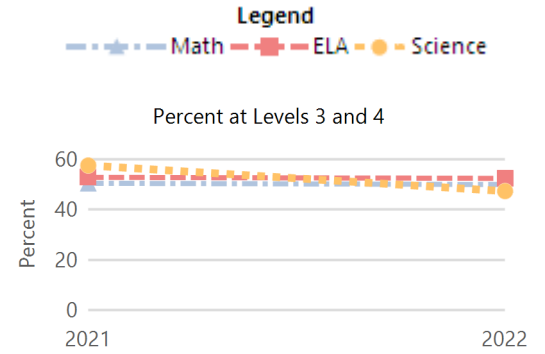
	2019-20			2020-21			2021-22		
	Math	ELA	Sci	Math	ELA	Sci	Math	ELA	Sci
Level 1	N/A	N/A	N/A	N/A	N/A	N/A	N/A	N/A	N/A
Level 2	N/A	N/A	N/A	N/A	N/A	N/A	N/A	N/A	N/A
Level 3	N/A	N/A	N/A	N/A	N/A	N/A	N/A	N/A	N/A
Level 4	N/A	N/A	N/A	N/A	N/A	N/A	N/A	N/A	N/A

N/A: To protect student privacy, when a subgroup has fewer than 10 students, the data are not displayed.

### ACT Performance (2022 School Year)

ACT is a national college admissions exam that includes subject level tests in English, Math, Reading and Science. Students receive scores that range from 1 to 36 on each subject and an overall Composite score. This report provides the average Composite score for the 2022 graduating seniors who took the ACT as sophomores, juniors, or seniors.

Note: Not all eligible students completed an ACT.



Building

State **19.8**