

TEACHER FEATURE  
CREATIVITY IN PE CLASS P.10

AT THE MIDDLE SCHOOLS  
CAREER EXPLORATION P.16

ALUMNI SPOTLIGHT  
CLASS OF 2003 P.18



A PUBLICATION OF USD 230 | WINTER 2022

# SPRING HILL

## SCHOOLS MAGAZINE



# THE HOOP SCOOP P.6

Spring Hill School District  
101 E. South Street  
Spring Hill, KS 66083

PRSR STD  
U.S. Postage  
PAID  
BLS

**Your Protection Is Our Strength**

We protect the things that matter most to you.



**TRU INSURANCE SOLUTIONS**

Home | Auto | Business | Farm | Life

Visit [ElliottInsuranceGroup.com](http://ElliottInsuranceGroup.com)

# FROM THE SUPERINTENDENT

Welcome to second semester for Spring Hill USD 230! Our district continues to be the fastest growing district in Kansas with an additional 276 students reporting to school this year. We continue to be blessed with an outstanding community supportive of our district.

As with the start of any school year, there was enormous excitement as to what 2021-22 would be like. We were able to start on time with only K-6 under a county mask mandate. We are hoping the mask mandate will be able to be lifted soon.

Our school district's Strategic Plan has two primary goals: academic excellence and personal development. Our goals continue to be to show improvement every day. None of this would be possible without our outstanding teachers and our support staff. These staff members continue to go above and beyond for our students. We are very fortunate and blessed to have such an incredible staff working in our school district.

We opened our fifth elementary school this year and will be opening our third middle school in two years. Our Educational Support Center and our new District Administrative Center are open. We've finalized



the purchase of land that should help us with future schools when the need arises. With two recent bond issues, we've been able to build new school buildings, upgrade our technology, and take care of deferred maintenance.

We certainly appreciate our community and we will continue to work to provide the best educational opportunities possible for our students knowing our staff will receive support from our stakeholders.

Spring Hill continues to be a great place to go to school, work, and live.

Regards,

A handwritten signature in black ink that reads "Dr. Wayne Burke".

Dr. Wayne Burke, Superintendent

## WHAT'S INSIDE

- 3 From the Superintendent
- 4 #LEARN230 Social Media Roundup
- 6 The Hoop Scoop: Lorelei Harris Leads Bronco Basketball
- 10 Inspiring Creativity in the PE Classroom
- 14 Bridging the Gap with FastBridge
- 16 Middle School Students Explore Future Careers
- 18 Alumni Spotlight: Class of 2003



### Spring Hill School District

17640 W 199th Street  
Spring Hill, KS 66083

(913) 592-7200  
info@usd230.org  
www.usd230.org

# WINTER 2022

VOL. 8, NO. 2

*Spring Hill Schools Magazine is a publication of Spring Hill School District. All content and images were curated by the district's Communication Department, and the magazine is published by NPG Newspapers. The printing of this publication is funded by local advertisers at no cost to the district.*





# #LEARN230

## SOCIAL MEDIA ROUNDUP



**Spring Hill Early Learning Academy**

SHELA students learning how to make butter by following recipe instructions. [#Learn230](#)



**Dayton Creek Elementary School @DCESCavaliers**

Flex Library in Action! With our librarian, 4th grade started a research project mimicking the "Who Would Win" book series by [@jerryapallotta](#). Ss learned how to cite their source, take notes, and reviewed the rubric in small groups. [#Learn230](#) [@SHSchools](#)



**PCES Mustangs @PCESMustangs**

A big thanks to Mrs. Garcia and Ms. Peterson and their classes for their contribution to the local animal shelter as part of their humanitarian project. [#pcesmustangs](#) [#Learn230](#)



**SHES Colts @SHESColts**

Kindergarten came to the library to work in the Makerspace. Students listened to the story Room on the Broom and then worked together to build a structure to keep the characters safe from the dragon! [#Learn230](#)



**TSES Rangers @TSESRangers**

Math in action! Third graders took a trip to Hy-Vee to put their great math skills with weights and costs to work. They also enjoyed a nutrition talk and learned about careers at Hy-Vee. [#Learn230](#)



**WCES Wranglers | USD 230 @WCESWranglers**

It's Fire Safety month. Thanks to the Spring Hill Fire Department for teaching all of our students about this important topic during today's specials! [#Learn230](#)



**SHMS Mavericks @SHMSMavericks**

6th graders study the ancient Egyptian game of Senet in Mr. Maples' social studies classes as part of their unit on ancient Egypt civilization. For the full story visit [shms.usd230.org!](#) [#Learn230](#)



**WSMS Stallions @WSMStallions**

Let's TACO 'bout STEM! Sixth grade students are beginning a new Project Based Learning activity in Mrs. Dome's class. They are designing a food truck! What better way to learn about them than to consult the professionals. Thank you Juan and Only! [#Learn230](#)



**SHHS @SHHS\_Broncos**

Screen printing in graphic design class. [#Learn230](#)



# A whole new reason to ♥ where you live.

HOSPITAL  
NOW OPEN



Birth center  
Surgery  
Heart Care  
Primary Care  
ER

The expert care you trust now has a new location. AdventHealth South Overland Park, a full-service hospital located at 165th and 69 Highway, is now open. We're bringing new doctors and more specialties to Johnson County so you can stay whole for your whole life.

  
**AdventHealth**  
South Overland Park

[AdventHealthKC.com/SouthOP](https://AdventHealthKC.com/SouthOP)





# THE HOOP SCOOP

## LORELEI HARRIS LEADS BRONCO BASKETBALL

*By Annabelle Davis, SHHS Student Reporter*

***Make it to sub-state.***

***Win state.***

These are Lorelei Harris' two goals for her senior high school basketball season - her last season after 14 years. Originally, Harris had no intention to stick with basketball, but as she tried several different sports at a young age, basketball was the sport that she instantly clicked with. "I started playing basketball in kindergarten at five years old. As a kid, I really got started by trying a ton of different sports, and basketball was always my dad's favorite," Harris said.

Harris has always been one of the tallest on the team, if not the tallest on the team. Because of her height, she has always been the post player during her 14 years of basketball. Harris' position plays a very important role because her teammates rely on her, and the other post, to prevent the opposing team from scoring. Harris' height gives her a major advantage on defense because of how potentially easy it is for her to block a basket. Aside from defense, she also has an advantage on offense because she can get the ball easily from her point guards and shoot the ball. As a 5'9" senior, she continues to get several blocks and points each game.

For the 2021-2022 season, Harris said there is a good group of girls on the team who all represent Spring Hill respectfully as they all maintain a positive attitude.



SHHS Varsity Girls Basketball team during the national anthem.

"Attitude changes everything, and having a positive outlook on the game can really help the team. [Positive attitude] holds an impact on the team to have a good mindset," said Harris.

Over the past two seasons, there have been quite a few changes due to the COVID-19 pandemic. This year, Harris said she is confident that the games will go smoother because of how packed the stands may be as compared to previous years. "Having a crowd helps the whole team get into it and hypes the whole team up to do better," said Harris.

Even though the past seasons haven't gone too smoothly, there are still several highlights for the team and for Harris' high school basketball career. "Last year beating Pittsburg to play in the state championship was really fun and held a lot of good memories," Harris said.

After losing several starting seniors from last year's season, Harris said she remains confident with how the season will go this year. "We have a lot of competitive girls, and I think we will be pretty scrappy this year. Being really aggressive and diving after loose balls holds an impact. I am really looking forward to it," Harris said.

Outside of basketball, Harris is involved in other clubs and sports. She has been a member of the track team for three years and plans to be a member of the track team once again for her senior year. Harris' track and field events include high jump, triple jump, and long jump.

"Dance, [which I did before high school,] helped me out with jumping events because it transferred over to it. It has helped me be more coordinated when it comes to jumping," said Harris.

Harris has been a member of NHS for two years and was a PALS member her sophomore and junior year.

After high school, Harris has big plans for her future. Recently, she signed to the Kansas State University



Harris anticipates the rebound against Shawnee Heights.

rowing team. Although Harris will not continue to play basketball, she is really excited for where rowing will take her.

"Basketball has taught me what it means to work with a team, and how to have grit," Harris said. "Basketball has prepared me for college and rowing because of the team sport. I am really looking forward to the transfer over."



## Varsity Girls Basketball Schedule

F 1/14	6:00 PM	Away v. Tonganoxie
W 1/19	7:30 PM	Home v. Louisburg
Th 1/27	TBD	Tournament @ Wellsville
Sa 1/29	TBD	Tournament @ Wellsville
T 2/1	5:45 PM	Away v. De Soto
F 2/4	6:00 PM	Home v. Piper
T 2/8	6:00 PM	Home v. Paola
F 2/11	6:00 PM	Away v. Louisburg
F 2/18	7:30 PM	Away v. Eudora
T 2/22	6:00 PM	Away v. Bonner Springs
F 2/25	6:00 PM	Home v. Ottawa
T 3/1	TBD	Sub-State
Sa 3/5	TBD	Sub-State
W 3/9	TBD	State Tournament
F 3/11	TBD	State Tournament
Sa 3/12	TBD	State Tournament



# CHOOSE UMKC

MORE THAN  
**\$190 million**

IN FINANCIAL AID AWARDED TO STUDENTS EVERY YEAR

*Automatic scholarships available*

**125+**

ACADEMIC AREAS TO EXPLORE

NAMED ONE OF THE

**159**

BEST MIDWESTERN COLLEGES  
— Princeton review

**UMKC**  
*Office of Admissions*

ATTERBURY STUDENT SUCCESS CENTER  
5000 HOLMES ST.  
KANSAS CITY MO, 64110  
816-235-8652  
800-775-8652 (TOLL FREE)

[UMKC.EDU/ADMISSIONS](http://UMKC.EDU/ADMISSIONS)

**UMKC**

UMKC IS AN EQUAL OPPORTUNITY/AFFIRMATIVE ACTION INSTITUTION.

75151249

ENHANCE YOUR  
CLASSROOM  
OR SCHOOL

**DON'T  
MAKE  
THE  
WORLD  
WAIT.**

## CURRICULUM AND INSTRUCTION DOCTORATE

COMPLETE AN Ed.D.  
ONLINE IN THREE  
YEARS WHILE YOU  
CONTINUE TO TEACH.

**KANSAS STATE  
UNIVERSITY.**

College of Education

COHORTS START EACH SUMMER,  
BUT YOU CAN JOIN US ANYTIME.

[online.k-state.edu/campaign/  
curriculum-instruction/](http://online.k-state.edu/campaign/curriculum-instruction/)

75153529



**Mention this ad  
to receive  
15% OFF  
Duct Cleaning**

801 S. Silver St.  
Paola

913-294-2707  
[www.environmentalheatcool.com](http://www.environmentalheatcool.com)  
Our main attraction is your satisfaction!

75153556

## LIFE CAN BE AN ADVENTURE. BE SURE YOUR BANK CAN TAKE YOU ANYWHERE.

- FREE MOBILE DEPOSIT
- MANAGE YOUR DEBIT CARD ANYWHERE OR ANYTIME
- 3 FREE ATM WITHDRAWALS PER MONTH
- POPMONEY – PERSON TO PERSON TRANSFER
- TRANSFER NOW – TRANSFER BETWEEN BANKS
- CALL FOR GREAT RATES

**OPEN AN ACCOUNT TODAY AT  
[WWW.TRICENTURY.BANK](http://WWW.TRICENTURY.BANK)**



**TriCentury Bank**  
since 1894

Member  
**FDIC**  
LENDER

**De Soto**  
33485 Lexington Ave.  
De Soto, KS 66018  
Main: 913-583-3222  
Fax: 913-583-3266

**Spring Hill**  
708 S Webster St.  
Spring Hill, KS 66083  
Main: 913-592-5700

**Lawrence**  
1444 Kasold Dr.  
Lawrence, KS 66049  
Main: 785-592-3211

75153578



**NO JOB TOO BIG.  
NO JOB TOO  
SMALL.**



**H.E.R.S. Inc. is an official dealer for Altoz,  
Bob-Cat, Dixie Chopper, Gravely, and Red  
Max mowers.**

**H.E.R.S. Inc. specializes in**

- Sale & Service of Outdoor Power Equipment
- Reseal Hydraulic Cylinders
- Make Hydraulic Hoses and Mechanical Control Cables while you wait
- Small Engine Repair



107 W. Johnson St., Spring Hill  
**913-247-3530** hersinc.net

75153577



**JOHNSON COUNTY  
COMMUNITY COLLEGE**

YOUR  
**TOMORROW**  
STARTS HERE. SM

## **JCCC: A RESOURCE OPEN ALL YEAR**

**We're here for  
every step of your  
educational journey.**

We offer flexible online and on-campus classes—all at competitive tuition rates.

**Enroll today. [jccc.edu/enroll](https://jccc.edu/enroll)**

High school students can earn JCCC credit through College Now—our concurrent enrollment program.

**Visit [jccc.edu/collegenow](https://jccc.edu/collegenow)**

75153734



*Kadera-Redmond with blocks from the Imagination Playground.*

## INSPIRING CREATIVITY IN THE PE CLASSROOM

*By Christopher Villarreal*

"If I could do anything, I would be an artist of some kind," said Marcel Kadera-Redmond, teacher at Spring Hill Elementary School. "I enjoy being creative-just creating and building things all day." With that declaration, you might assume that Kadera-Redmond is an art teacher, but he has been a PE teacher at SHES since 2008.

While passionate about physical education, Kadera-Redmond and his three sisters grew up in an artistic family. His mother, Theresa Kadera, worked as a seamstress and illustrator. Kadera-Redmond remembers spending time in the theatre growing up while his mother created costumes for stage productions. His father, Carl Redmond, contributed to the creativity of his family by instilling his own passion for music in his children. Kadera-Redmond learned to play the drums and still plays them today.

With a passion and talent for artistic endeavors identified early, Kadera-Redmond attended an arts magnet elementary school in Berkley, California. It was there that

he started to hone his talent for drawing portraits. The positive impact of his school teachers inspired Kadera-Redmond to pursue education as a career for himself. "They were an important part of my life from early on," said Kadera-Redmond. "They would stay after school just to talk with me. They would support my out-of-school activities. Many became and are still family friends. They taught me that teaching is more than just classroom lessons."

Kadera-Redmond's experience in school and with his teachers helped him develop his philosophy for his own classroom. "I am most proud of my students when they grow and see themselves capable of more than they could have imagined," he said. "Every day, the students and I participate in activities that help us learn about our bodies, and how to live healthy and active lives, while experiencing life lessons."

"I love that Mr. Kadera-Redmond brings his passion and energy into our PE program," said Tammy Endecott, SHES principal. "He always has a focus on the whole child and works to help them develop not only physically, but creatively and mentally as well."

This school year, Kadera-Redmond had the opportunity to infuse his PE classroom with his artistic passion



through the Spring Hill Education Foundation Teacher Excellence Grant program. Kadera-Redmond saw a product called Imagination Playground, which the company defines as, “an interactive, transformable environment that prompts children to manipulate their environment and create a playspace of their own.” He knew this was an incredible opportunity to allow his students to explore their creativity while also being physically active. The only issue he faced was the \$2,300 price tag. Shelly Huber, SHES library media specialist, was a SHEF Teacher Excellence Grant recipient last year and encouraged Kadera-Redmond to apply for the program.

After going through the application process, Kadera-Redmond’s grant was one of five selected for funding by the Education Foundation. Kadera-Redmond was ecstatic to bring this opportunity to his students and grateful to the Education Foundation for providing the grant funding.

“This is a perfect way for me to bring creativity and social-emotional learning into the gym,” said Kadera-Redmond.

**“I am most proud of my students when they grow and see themselves capable of more than they could have imagined.”**

The Spring Hill Education Foundation awarded nearly \$10,000 in Teacher Excellence Grants for the 2021-22 school year. For the past six years, the foundation has been awarding these grants to teachers for projects to enhance extraordinary educational opportunities for students in the classroom.

Thanks to the generous contributions from patrons and this year’s corporate sponsors, the Foundation was pleased to award the following grants:

Marcel Kadera-Redmond, *Spring Hill Elementary School*  
Project: Imagination Playground, \$2,364

Ronald Juzeler, *Spring Hill Middle School/Woodland Spring Middle School*  
Project: Orchestra Workstation, \$700

Megan Daniels, *Dayton Creek Elementary School*  
Project: Tower to Table, \$1,718

Brad Reinking, *Spring Hill High School*  
Project: Wacom Tablets for Graphic Design, \$3,800

Michelle Long, *Spring Hill Elementary School*  
Project: 3D Pens, \$700

For more information about the Spring Hill Education Foundation, visit [shef.usd230.org](http://shef.usd230.org).



Hand-drawn portrait done by Kadera-Redmond.



Kadera-Redmond with his SHEF Teacher Excellence Grant award check.



Kadera-Redmond using the Imagination Playground with his class.



# THE STATE BANK of SPRING HILL

Spring Hill, Kansas 66083

**(913) 592-3326**



EQUAL HOUSING  
LENDER  
75153465

[www.SBSH-KS.com](http://www.SBSH-KS.com)

Member FDIC

A FULL  
SERVICE  
BANK

**99%**

job and graduate  
school placement  
rate

**#1**

college in Kansas  
for return on  
investment

**#1**

college in Kansas  
for preparing  
graduates  
to get a job

Discover whether Baker is right for you.



**BAKER**  
UNIVERSITY

Request info today!

75153480

**DON'T  
MAKE  
THE  
WORLD  
WAIT.**

IF YOUR BACHELOR'S  
DEGREE DIDN'T LEAD  
TO THE CAREER YOU  
ALWAYS ENVISIONED...

EARN A MASTER'S DEGREE  
AND COMPLETE TEACHING  
LICENSE REQUIREMENTS  
ONLINE IN 12 MONTHS.

APPLY BY APRIL 1, 2022 FOR THE MAY 2022 COHORT  
[online.k-state.edu/campaign/master-of-arts-teaching/](http://online.k-state.edu/campaign/master-of-arts-teaching/)

**KANSAS STATE**  
UNIVERSITY

College of Education

**MASTER OF ARTS  
IN TEACHING**

75153530



**STEP  
INTO  
SUCCESS**

Career advancement is within reach with one of USM's  
flexible graduate education programs.

- + Doctor of Education
- + Master's in School Counseling
- + Master's in Education

**Learn more during a monthly virtual info session.**

[STMARY.EDU/SPRINGHILL](http://STMARY.EDU/SPRINGHILL)

**UNIVERSITY  
of SAINT MARY**  
OVERLAND PARK CAMPUS

75153531



**Bring culture home**  
with an AFS international exchange student

Embark on a cultural education of the highest order!  
When you host a high school exchange student with AFS,  
you open your door to new foods, customs, and worldviews.

Questions? Talk to your local AFS representative about the Hosting  
experience: Consuelia McCourt, 816-522-8104 (m); [afs.south70@gmail.com](mailto:afs.south70@gmail.com)

**1-800-AFS-INFO**  
[afsusa.org/host](http://afsusa.org/host)



AFS-USA is supported through funding from the U.S. Department of  
State. AFS-USA is a 501(c)(3) non-profit organization.

75153533





# Kansas Rush Soccer Club

NONPROFIT PROVIDING  
OPPORTUNITIES FOR LOCAL YOUTH  
TO PLAY SOCCER SINCE 1980

[www.kansasrush.com](http://www.kansasrush.com)

**SPRING  
2022**

## Pre-Tryout Camp

registration  
opens soon!  
Be prepared  
for tryouts!

## Spring Recreational League

K-2nd grade -  
register by Feb 13th  
to avoid late fees  
3rd-12th grade -  
call to see if we  
still have room

## Competitive Tryouts

registration will open  
when KSYSA allows

## Spring Junior Rush

3 age groups:  
Mighty Mites (3&4)  
Beginner (4&5)  
Advanced (age 5)



For more info  
please visit our  
website  
[kansasrush.com](http://kansasrush.com)

call or email  
(913)764 4111  
officestaff@  
[kansasrush.com](http://kansasrush.com)

**...IT'S FUN!**

# GIVE YOUR FAMILY THE COVERAGE IT DESERVES

- Automobile insurance
- Homeowner's insurance
- Life insurance



## Kirk McLoughlin

Your Local Agent  
21211 W 223rd St, Spring Hill, KS 66083  
[kmcloughlin@farmersagent.com](mailto:kmcloughlin@farmersagent.com)  
<http://agents.farmers.com/kmcloughlin>

**Call 913-686-6244 today!**  
Let me help you get the most value  
out of your insurance coverage.



Restrictions apply. Discounts may vary. Not available in all states. See your agent for details. Insurance is underwritten by Farmers Insurance Exchange and other affiliated insurance companies. Visit [farmers.com](http://farmers.com) for a complete listing of companies. Not all insurers are authorized to provide insurance in all states. Coverage is not available in all states. Life Insurance issued by Farmers New World Life Insurance Company, 3120 139th Ave. SE, Ste. 300, Bellevue, WA 98005.

# BRIDGING THE GAP WITH FASTBRIDGE

By Christopher Villarreal



Taylor Woodward assisting a student in her Math 8 class at Spring Hill Middle School.

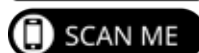
In the Spring Hill School District Strategic Plan 2026, one of the main objectives is academic excellence: Each student will meet or exceed grade-level academic expectations in order to achieve academic excellence. In order to assess the needs of and provide individual attention to each student, the district began implementing FastBridge Learning reading and math assessments in the 2021-22 school year. FastBridge Learning replaces the NWEA Map assessments.

"The decision to transition from NWEA Map to FastBridge allows us to streamline the assessment process, administer assessments in a more timely manner, and immediately utilize the robust data to impact instruction," said Dr. Erin Smith, director of teaching and learning.

These tests—administered each fall, winter, and spring—guide teachers with instructional planning to best support the needs of every learner. Teachers look at the screening scores immediately after the testing and identify if the student is performing at grade level. Students whose scores are below the expected benchmark are offered additional academic support to help them meet the learning goals at their grade level. The FastBridge

assessment results provide specific information to teachers about where gaps in instruction or ability may exist. Students are able to receive additional support on specific skills to address those gaps during the regular school day through the district's Multi-Tiered System of Supports (MTSS) program.

Screening results are shared with parents and guardians through the FastBridge Family Report during Parent/Teacher conferences. The Family Report answers three main questions parents have: *How is my student doing? How does my student compare to his or her peers? And how have my student's scores changed over time?* Your child's teacher will discuss both academic strengths and opportunities for growth in reading and math.



Spring Hill School District administers the following FastBridge Assessments:

## **earlyMath | Grades K-1**

A set of 17 subtests that measure early math skills.

## **aMath | Grades 2-12**

Computer adaptive test of broad math skills.

## **earlyReading | Grades K-1**

A set of 14 subtests that measure early reading skills.

## **aReading | Grades 2-12**

A computer adaptive test of broad reading skills.

To learn more about the family report, please visit: <https://www.illuminateed.com/products/fastbridge/reports/family-report/>.





**PRIME**  
Accounting Solutions, LLC

**Contact us for your  
tax, bookkeeping,  
and payroll needs**

*Prime Accounting proudly  
supports the Spring Hill  
School District*



**Prime Accounting Solutions, LLC**

408 N Webster St  
Spring Hill, KS 66083

**(913) 592-2050**

[www.primeaccounting.net](http://www.primeaccounting.net)

*Serving Spring Hill since 2018*



Clay Frigon and students from the Spring Hill High School Health Science career cluster presenting to 8th grade students at Spring Hill Middle School.

## MIDDLE SCHOOL STUDENTS EXPLORE FUTURE CAREERS

By Landon Parker

We have all heard the age-old question: "What do you want to be when you grow up?" For some, this answer is an easy one with an ideal career in mind. For others, there may not be a feeling of that one true calling yet. This is the question that students at the secondary level are starting to think about as they transition from middle school to high school to life after school.

"I wish they shared that the CTE pathways go over so many different career paths, when I was in 8th grade they made it sound like all they had was CNA and nursing," said Kaylee Oakes, SHHS senior. "But now I know we go over a lot of different career paths like athletic training, strength and conditioning, nutritionists, personal trainers, nursing, and more."

Starting this year, the eighth grade students are getting an early preview into the exciting opportunities before them. Spring Hill High School staff and students from the Career & Technical Education (CTE) program are

providing career cluster introductions for the middle school students. "It was really exciting for me to get to talk to younger students about something I am passionate about," said Alana Frigon, SHHS senior. "I enjoyed sharing my experiences with them and it was exciting to see them interested in what I was talking about."

The presentations at Spring Hill Middle School and Woodland Spring Middle School cover each of the major pathways: Agriculture, Business & Marketing, Engineering, Family & Consumer Sciences & Education, Health Science, and Media & Technology. "Our students are craving choice in their school experience," said Trevor Goertzen, SHMS principal. "Eighth grade students are excited and apprehensive about high school; therefore, the sooner we open doors of opportunity to them and create connections with their future teachers and classmates, the better. I want our students to be excited about high school and what lies ahead of them; I also want our students and families to have a strong sense of pride in the opportunities for all students in high school."

**The sooner we open doors of opportunity to [students] and create connections with their future teachers and classmates, the better.**



If a student is unsure about their next step after high school, they can take the Xello career guidance assessment that will help match their interests to potential careers. The 16 clusters are an opportunity for SHHS students to gain valuable real-world knowledge on the path to becoming college-ready, career-ready, and life-ready.

"Adding the introductions to each of the CTE pathways will strengthen our induction to high school for our students by allowing them to learn about each of the pathways and the courses in each," said Rod Sprague, WSMS principal. "As a result, students have a better understanding of CTE so when they start working on their high school program planning they are more focused on their course selection."

Career & Technical Education career clusters offered at Spring Hill High School are:

A.V. Communications	Plant Science
Agriculture Science	Programming & Software Development
Animal Science	Restaurant & Event Marketing
Architecture Design & Construction	Teaching / Training
Business Finance	Visual Arts - Fashion, Apparel, & Interior Design
Engineering	Visual Arts - Graphic Design
Health Science	Web & Digital Communications
Marketing	
Off-Campus Opportunities (OATC & JCCC, College Now)	

For more information about the SHHS Career & Technical Education program, visit [shhs.usd230.org/CTE](http://shhs.usd230.org/CTE).



# WILSON'S

*Jewelers*  *"Your Personal Jeweler"*

**We cover all your jewelry needs**

**506 Baptiste Dr, Paola**  
[www.wilsonsjewelers.org](http://www.wilsonsjewelers.org) • 913-294-2936

75153636

## Show your SCHOOL SPIRIT and earn cash for your school!



Only First Option Bank offers a debit card that serves you, your school and your community!



**It's a win, win, win!**

Each time you use your **First Option Bank Bronco Visa® Debit Card** and sign for your purchase, a donation is made to help your school! **We've donated over \$206,850** to the Spring Hill School District Since 2007.

**Get your card today!**

Thank you for helping us raise over \$1.75 Million to support education within our communities, through our school logo debit card program!



**Teach your kids to save with a First Option Fun Buddy Savings Account!**



- Kids 12 & Under
- FREE Fun Buddy T-Shirt or Piggy Bank
- FREE Fun Buddy Account Book
- Deposits Earn Points Redeemable for Prizes
- \$10 Opening Balance
- No Fees
- Competitive Interest calculated on daily collected balance is compounded and credited quarterly
- Access to Fun Buddy Club Activities

75153748



## GIRLS STATE BASKETBALL CHAMPIONS



**[2003] was a year for dreams to come true for the members of the varsity girls' basketball team. For the senior members of the team, this state championship was six years in the making.**

**"I told the girls that if they stayed together they could win a state championship," said Terry Sharp, middle school basketball coach.**

**[The State tournament] came down to the final game of the seniors' career against Topeka-Hayden.**

**"It was like every other game. I knew as a team we could do it. I just stayed relaxed and tried not to think of it as the championship game," said Holly Gault, senior.**

**As the final buzzer sounded, the Spring Hill section erupted with fanatic cheering.**

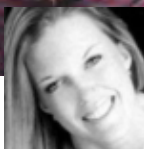
**"Finally! Was the first thought that went through my head as the buzzer sounded at the end of the game," said Charise Mellen, senior. The girls brought home the first State Basketball championship ever.**

*Excerpt from the 2003 volume of The Bronco yearbook.*

# ALUMNI SPOTLIGHT CLASS OF 2003



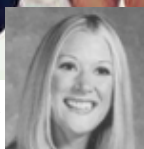
**MEGAN SULLIVAN**



"Bringing home a championship senior year with my best friends was so incredibly special. The town of Spring Hill, our families and our classmates rallied behind us every step of the way."



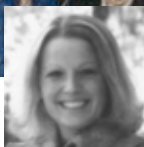
**JESSICA CRAWFORD**



"[Coach Bernie Smith] was an intense, tough coach that prepared me for collegiate basketball. As a coach now, I understand how rare it is to get a talented group and motivated group on the same team. The entire community of Spring Hill supported us, and I am not sure they will ever understand how grateful we were for that."



**AMANDA McDONALD**



"I have to say that being a part of the SHHS basketball program was the biggest highlight of my high school experience. While I didn't get much playing time in the 'big' games, [Coach Smith] always made me feel that my role on the team was important."



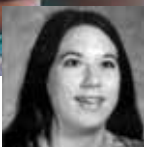
**JOSIE KALLHOFF**



"Coach Bernie Smith instilled a work ethic in her program that carried me through as I played college basketball at Allen County College. My teammates and coaches were like family and it made winning the state title that much more special."



**TRACY NEWTON**



"Being a part of the Girls Basketball team at Spring Hill was an honor! Being State Champions will be a memory of a lifetime. We were the best!"



# We Support Spring Hill Schools



*Robert*  
**BROGDEN**  
BUICK GMC

Kansas **#1** Volume  
City's **#1** GM Dealer

1500 Santa Fe Street, Olathe

**(913) 782-1500**

**ROBERTBROGDEN.COM**



**THE**  
**ALL-NEW** *Robert* **BROGDEN'S**  
Olathe KIA



**130 North Fir Street, Olathe | (913) 390-6800**

**OlatheKIA.com**

# Advanced healthcare. Advancing lives.

**Dedicated specialists. With you every step of the way.**

At Olathe Health, we provide state-of-the-art care for complex cardiovascular conditions. Treat cancer with expertise and compassion. Perform innovative orthopedic procedures. And lead the way with a new spine surgery program. Because changing lives with advanced specialty care is what drives us, one patient at a time.

The power  
of innovative  
specialty care.

**ADVANCED SURGERY**

**CARDIOLOGY**

**ONCOLOGY**

**ORTHOPEDICS**

**SPINE**



Find a specialist today at [olathehealth.org](http://olathehealth.org).  
Or call 913-791-4200.